

# Switches for in and outdoor use

Every electric switch on-board has to meet the highest demands. Mastervolt offers a wide choice of stylish, waterproof operation buttons and switches for a range of on-board functions. These feature descriptive symbols and are suitable for both indoor and outdoor installation. The switches are tested for frequent use at  $-40\text{ }^{\circ}\text{C}$  to  $85\text{ }^{\circ}\text{C}$  ( $-40\text{ }^{\circ}\text{F}$  to  $185\text{ }^{\circ}\text{F}$ ) and designed to last more than 150,000 cycles. LED lamps are used to brighten the on/off indication. The MasterVision approach with a basic frame guarantees you a very simple assembly and installation.



The electrical switches provided by Mastervolt match the MasterVision design and colour scheme superbly. Switches and panels are also suitable for outdoor use. Pictured a combined AC and DC switchboard on-board a 50 ft motoryacht.

## Switch module

Fully waterproof switch (IP66) for outdoor and indoor installation. It is available in single or double pole versions and in various configurations. An LED illuminates the function symbol of the operation button (page 120).

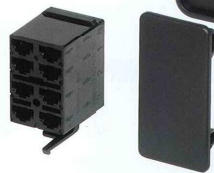


## Installation frame

The switch is inserted into a weather-resistant installation sheath. Mount into the existing dashboard using sealant or glue or within the accompanying ready-made installation frame (page 120).

## Electrical connection

Connection block (VCH) for insulating and securing the connections (page 120).



## Six way frame

Convenience is a blessing: this mounting frame for six switches guarantees a quick installation and smart appearance, for example on an outside helmsman's station (page 120).



## Three way frame

Installation frame for three switches. Parts of frames with separate end segments are also available (page 120).



## Operation button

This weather-resistant operation button made of polycarbonate composite can be easily clicked onto the base switch. A key for removing the button again is also available. There are more than 60 different pictograms/symbols in stock (page 121).



## Convenient key

Tool for demounting the operation button (page 120).

## Blank plug

If you wish to leave room for future expansion, use a blank auxiliary plug for places in which you have not (yet) placed switches (page 120).